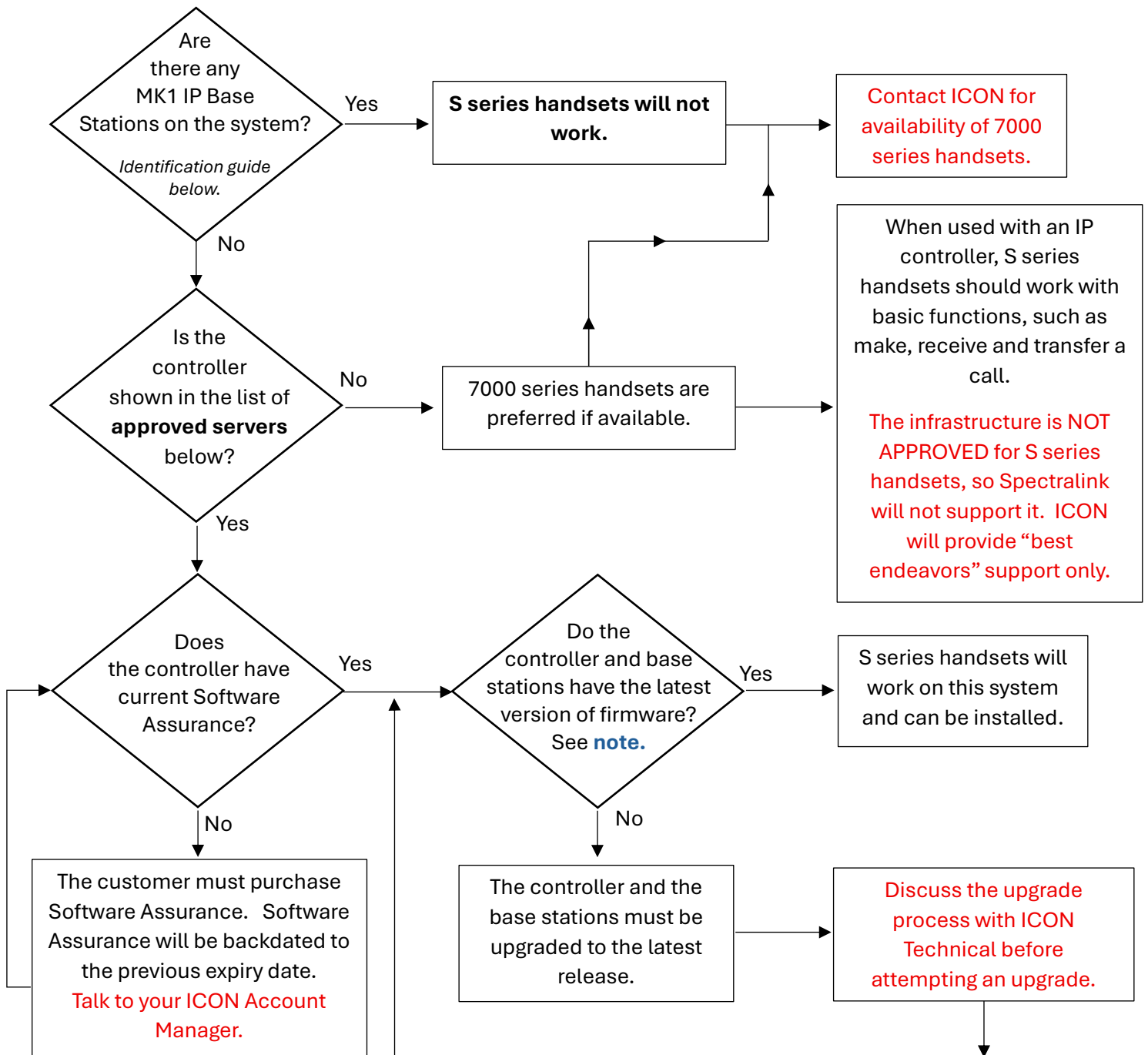


Spectralink S series handsets or 7000 series handsets?



For more technical detail, see our [blog post](https://www.icon-vad.co.uk/blogs/post/handset-types) – <https://www.icon-vad.co.uk/blogs/post/handset-types>

NOTE: If you are unsure of the firmware version and/or the status of the Software Assurance, talk to ICON Technical for guidance.

A DECTserver8000 system that is converted to a digital gateway must use RFP5 or RFP6 digital base stations.



MK1 IP Base has a single port, rear label shows part number 0233 **7300**

Approved Servers

IP DECTserver400, 6500 or VIP One.
DECTserver 2500 and 8000
S1000



MK2 IP Base has two ports, rear label shows part number 0233 **7400**